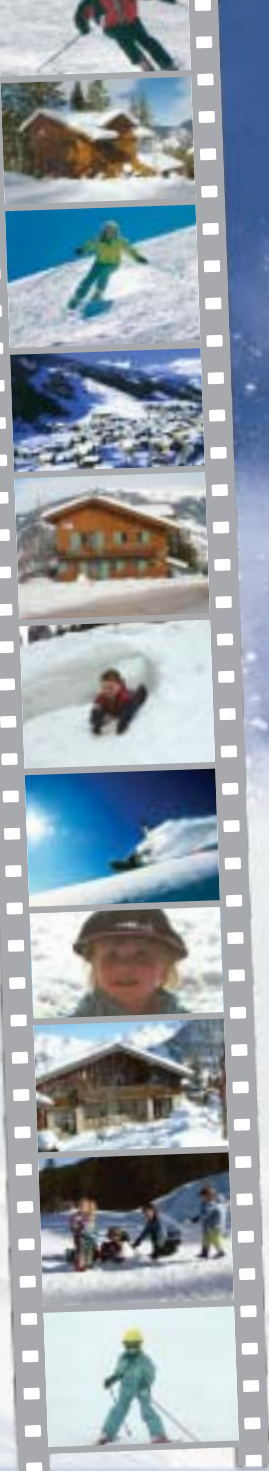


SKI MAGIC

Catered Chalet Holidays in the French Alps



Skiing is believing...



www.skimagic.co.uk

Contents

Page 2	Contents and resort info
Page 3	Piste map and ski facts
Page 4 & 5	Chalet Clementine, La Tania
Page 6 & 7	Chalet Chalouis, La Tania
Page 8 & 9	Chalet Chamili, La Tania
Page 10 & 11	Chalet Chocolat, La Tania
Page 12	Chalet Cuisine
Page 13	Childcare & The Magic Snowflake Club
Page 14	Lessons and Lift passes
Page 15	Equipment hire and Ski hosting
Page 16	Travel Info



La Tania

La Tania is located in The Courchevel valley at 1400 metres and first opened in 1992, in preparation for the Winter Olympics and is a true ski to door resort offering a friendly relaxed and peaceful atmosphere. It is a pedestrian only village which makes it particularly safe for children. The village has its own cinema, tourist office, supermarket, post office, cash point as well as a good selection of restaurants and bars including the famous Pub Le Ski Lodge. Several of the local bars have live bands on a few evenings a week and for après ski.

The modern 12 person Tania gondola links with a chairlift to take you to the Col de la Loze taking you

to slopes above Courchevel 1850 and Meribel and directly into The Trois Vallees system. There are snow cannons all the way down Folyeres, the rolling tree lined blue run into La Tania village ensuring excellent snow cover all season long from December through to April. Other runs back to the village are Plan Fontaine, the green run which winds its way through the pine forest and Moretta Blanche, the red run.

Courchevel is five ski resorts in one, named after their height in metres, above sea level, 1300 Le Praz, 1550, 1650, 1850 and La Tania. All the villages are linked with a free bus service which runs all day and late in to the night.

For non skiers there are organised snow shoe walks through the National Parks with a guide who will point out various points of interest, animal tracks and habitat. You may even be lucky enough to see chamois or ibex. Also available are husky sledging, paragliding, skidoo and hot air balloon rides, all of which can be arranged for you. There is a small gym, swimming pool and sauna located in the Montana Hotel in La Tania which is open in the afternoons and evening for non residents and larger swimming pools in 1850, ice skating and ten pin bowling available in Courchevel 1850.



Ski Magic Team

Welcome to our new brochure and our fourteenth successful season in the superb Three Valleys.

The skiing in Courchevel, La Tania and the Three Valleys is reputed to be the best in the world due to the huge and varied terrain, stunning scenery, high altitude and lengthy snow sure season. Last season was not the best season for snow in Europe but the Three Valleys had more snow than most resorts. We were able to ski back to all of our chalets from the start of the season in December, right through to almost the last week of the season in April.

As past guests know, all of our chalets are situated on or very close to the piste. We don't believe in walking in ski boots!

Chalet Chocolat, which was new to our programme two years ago, has now become a firm favourite with our guests. Situated in the heart of the old village yet just a few minutes walk from the gondola and ski school meeting places, it is a beautiful Savoyarde chalet with stunning views over the Bozel valley and is decorated and comfortably furnished in typical Alpine style. Chalet Clementine remains very popular with guests returning year after year to enjoy the welcoming log burning stove, very comfortable lounge and especially the premier cuisine offered in this chalet. Chalets Chalouis and Chamili are being modernized and up dated by their owners over the Summer months and are, as always, are very popular with families, as we are able to offer such good value deals for children. Chalet Clementine, our flag ship chalet, is to have a top of the range outdoor Jacuzzi hot tub installed ready for this season, so that guests staying in this chalet can relax and rest their weary muscles after a hard day on the hill.

Over the past thirteen years we have earned a reputation for providing comfortable, affordable chalets of varying sizes with something to suit every requirement. We aim to keep some chalets "child free" so that our adult only guests can enjoy their holidays without the patter of tiny feet. However, whichever chalet you choose, rest assured that the level of service and cuisine will be of the highest standard. Our chalet staff are chosen not only for their culinary skills but also for their warm and pleasant personalities. Ski Magic's excellent childcare team make our younger guests holidays great fun, giving parents the chance to relax, safe in the knowledge that their children are in capable hands. From the time of your first enquiry, we are committed to providing a high level of personal service and are always available to advise on travel arrangements, chalet layouts, childcare or any other details you may require. The vast majority of our guests are either recommended to us or guests who return year on year, a fact that we are very proud of but do not take lightly as we are always striving to improve the holidays we offer.

We live in resort all winter to ensure that every aspect of your holiday runs smoothly. We think that having experienced a chalet holiday, very few people go back to hotels or self catering. It's relaxed, easy going and best of all you don't need to worry about cooking, shopping or cleaning. Whether you require just one bedroom or a whole chalet, you will find that our chalets are the most enjoyable and sociable way of taking a skiing holiday.

We look forward to welcoming back old friends, meeting new and sharing with you a little Ski Magic.

Jane & Gordon





Les Trois Vallees

ASPECT : North
TOP STATION : 3200m
LIFTS : Courchevel area alone
1 Cable car, 9 Gondolas
16 Chairlifts, 40 Draglifts
124 others in the remainder
of the Three Valleys
LIFT CAPACITY : 68,300 Skiers per hour
RUNS : 25 Green, 38 Blue, 21 Red,
8 Black
SNOWBOARD PARK : Yes
SNOW CANNONS : 485
SKI BUS : Free
TRANSFER TIME : 2 hours approximately from
Geneva, Lyon and Grenoble
1 hour from Chambéry



Courchevel area only

The Trois Vallees is reputed to be one of the Worlds largest and best ski areas as it is so varied, extensive and snow sure due to the resorts height and aspect. It comprises 5 resorts -Courchevel which is five villages in one, each named after their height in metres above sea level, Meribel, Les Menuires, Val Thorens and La Tania. A free ski bus service runs all day and late into the night round all of the Courchevel villages and La Tania. The three Vallees boasts 600km of marked runs, 200 direct ski lifts, over 1230 snow canons, endless off piste and a tremendous amount of skiing for all abilities.

Snow conditions are almost guaranteed to be good from early December until late April due to the resorts aspect, altitude and snow making facilities.

There really are slopes to suit everyone. There is an amazing choice of meticulously prepared green and blue pistes for beginners and some superb runs through the trees towards La Tania. There are long open sweeping pistes on the Combe de Saulire and Creux and some excellent motorway skiing in Courchevel 1650 for intermediate skiers. For experts, the

couloirs have some of the steepest skiing in the Alps and good bumps are always available on Chanrossa, Marmottes and Suisse. The choice is almost endless which is why people come back to the Three Vallees time and time again.

For snowboarders there is a fun park in Courchevel 1850 and Meribel with a half pipe, kickers and plenty of jumps.

Even in high season the well designed lift system is capable of transporting 230,000 skiers per hour making lift queues almost unheard of.





Chalet Clementine





Chalet Clementine, La Tania

A charming chalet with premier cuisine. Situated in the heart of the pine forest just 50 metres from the piste.

Accommodates 14

Chalet Clementine is a charming chalet, traditionally built of local stone and wood in typically Savoyarde style. It nestles in the heart of the pine forest, 50 metres from the piste and about a 5 minute walk to the shops, bars and restaurants of La Tania. It is possible for reasonable skiers to ski back almost to the door. (snow conditions permitting) It has a cosy and comfortable lounge and dining room with a welcoming wood burning stove and satellite TV, DVD, CD stereo system and various board games for your enjoyment. Chalet Clementine will sleep 14 people in comfortable rooms, the majority of which are en-suite. It is possible to add extra beds or cots to some of the rooms for children.

FREE Wi-Fi Internet Access!!

Premier Cuisine

In addition to the superb cuisine served in our other chalets in La Tania, included in the price for Chalet Clementine are the following little extras that make your holiday that little bit more special.

Pre-dinner canapes and aperitif.
4 course dinner including cheese course.

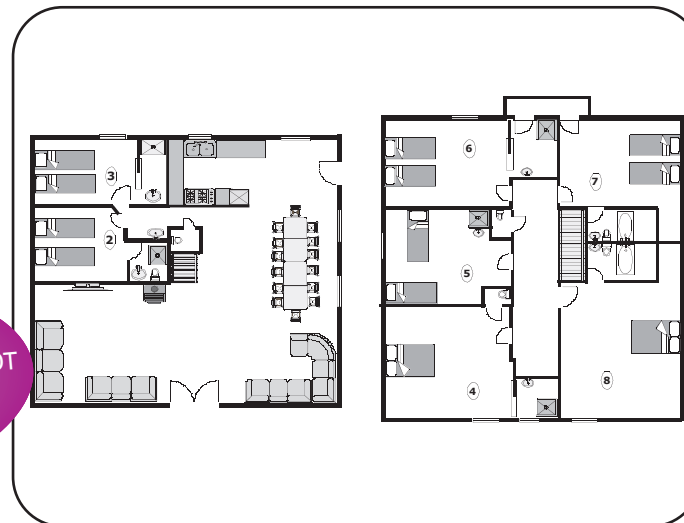
STOP PRESS!
TOP OF THE RANGE OUTDOOR JACUZZI HOT TUB TO BE INSTALLED FOR THIS SEASON
Plus iPod docking station and Xbox console

Quite the best skiing holiday i've had. G.P. Wirral

Excellent. Great location and brilliant food. J.C. Cumbria

Chalet Clementine - Sleeps 14

Ski and boot room with boot warming cupboard
Lounge and dining room with log burning stove, stereo, satellite TV and DVD player
Room 2. Twin room with en-suite shower, wash basin and wc
Room 3. Twin room with en-suite shower and wash basin. Private wc outside door
Room 4. Double room with en-suite shower, wash basin and wc
Rooms 5 and 6. Twin rooms with en-suite showers and wash basins. These rooms share a wc outside both doors
Room 7. Twin room with en-suite bath, wash basin and wc
Room 8. Double room with en-suite bath, wash basin and wc



Room plans not to scale



Towels and hairdryers are provided in all of the chalets and for the comfort of our guests. All chalets are non smoking. Outdoor shoes are not worn in the chalets so please bring a pair of slippers with you.





Chalet Chalouis

GREAT SAVINGS ON FAMILY WEEKS

In addition to the FREE child places available in Chalets Chamili and Chalouis we offer FREE CHILDCARE in the Magic Snowflake Club and FREE SKI HIRE for children under 10 years which makes these weeks unbeatable value for families.

Full details for dates see Price Insert.



Chalet Chalouis, La Tania

A comfortable chalet in an enviable location next to Folyeres piste.

Accommodates 19 in 2 separate units of 10 & 9

This chalet is undoubtedly in one of the best locations in La Tania. Ideally situated at the junction of the tree lined blue piste, Folyeres, and the easier green run, Plan Fontaine, Chalet Chalouis provides true door to door skiing, yet is only a five minute walk to the shops, bars and restaurants in the village of La Tania. Chalet Chalouis is divided into two separate units, Chalouis Bas which will sleep 10 and Chalouis Haut which will sleep up to 9. The Chalet is an ideal choice for families and both large and small groups as the two units can be taken together or separately. Both Chalouis haut and bas have very comfortable open plan lounge areas and are equipped with satellite TV, DVD, CD stereo system and board games. Both have patio doors leading to a large sunny terrace or balcony overlooking the piste.

***Free child places available for children under 12 years.**

**See Price List and How To Book*

Nothing was too much trouble. LM. London.

Excellent family holiday. Small touches make all the difference.

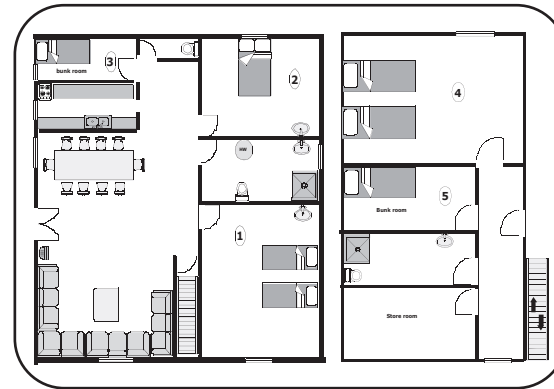
Thank you for all your hard work.

K.B.L. Berks.

Towels and hairdryers are provided in all of the chalets and for the comfort of our guests, all chalets are non smoking. Outdoor shoes are not worn in the chalets so please bring a pair of slippers with you.

Chalouis Bas - Sleeps 10

Ski and boot room with heated boot warmer shared with Chalouis haut guests
Open plan lounge and dining area
Room 1. Twin room with wash basin
Room 2. Double room with wash basin
Room 3. Bunk bedded room
Room 4. Twin room
2 x bathrooms with shower, wash basin and wc
Separate wc



Room plans not to scale

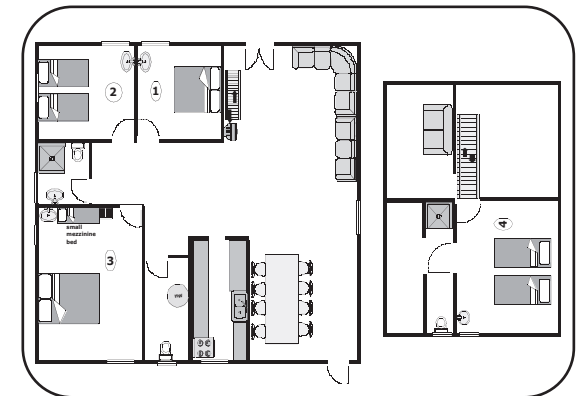


Free child places*
Best location
in La Tania



Chalouis Haut - Sleeps 9

Ski and boot room with heated boot warmer-shared with Chalouis bas guests
Open plan lounge and dining area with satellite TV, DVD and stereo
Additional lounge area on mezzanine with sofa bed (Note low and sloping roof space)
Room 1. Double room with wash basin
Room 2. Twin room with wash basin
Room 3. Double room with wash basin and small mezzanine bed suitable for child age 5-10 years as accessed by ladder
Room 4. Twin room with en-suite shower, wash basin and wc
Bathroom with shower, wash basin and wc
Separate wc



Room plans not to scale





Chalet Chamili



GREAT SAVINGS ON FAMILY WEEKS

In addition to the FREE child places available in Chalets Chamili and Chalouis we offer FREE CHILDCARE in the Magic Snowflake Club and FREE SKI HIRE for children under 10 years which makes these weeks unbeatable value for families.

Full details for dates see Price Insert.



Chalet Chamili, La Tania

Centrally situated, 10 metres from Moretta Blanche piste. Close to Gondola and Village.

Accommodates 20 in 2 separate units of 8 and 12

Chamili is perfectly situated right next to the Moretta Blanche piste and 2 minutes from the Tania gondola which carries you into the Trois Vallees lift system in no time. Snow conditions permitting it is possible to ski back to and from within 10 metres of the chalet. Traditionally built of wood, it has beautiful views over the valley and is a five minute walk to shops, bars and restaurants in the village. Although it is one chalet, Chalet Chamili is divided into two separate units, Chamili bas which will sleep 12 and Chamili haut which will sleep 8. Additional beds or cots can be added to some rooms for children. An ideal choice for families and groups large or small, as the chalet can be sold as a whole unit or separately. Both Chamili haut and bas have a warm intimate atmosphere in their comfortable open plan lounge areas that are equipped with satellite TV, DVD, stereo cd player and board games for your enjoyment. Patio doors lead to a sunny terrace or balcony. There is plenty of free parking close by.

***Free child places available for children under 12 years.**

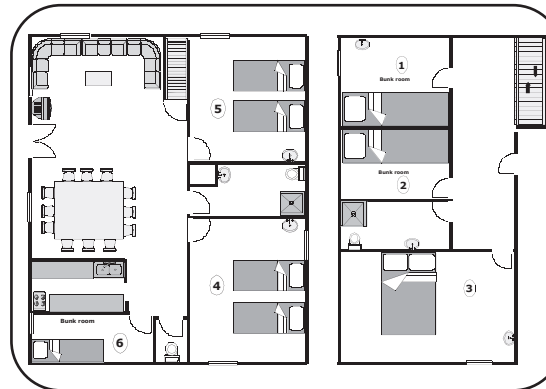
**See Price List and How To Book*

From our first enquiry to the moment we were dropped off at the airport, we felt very well looked after. GK Kent

No goodbyes as we will be back! Our best skiing holiday ever. G.P Wilts.

Chamili Bas - Sleeps 12

Ski and boot room with heated boot warmer shared with Chamili haut guests
Comfortable open plan lounge and dining area with satellite TV, DVD and CD players
Room 1. Bunk bedded room with wash basin
Room 2. Bunk bedded room
Room 3. Double room with wash basin
Room 4. Twin room with wash basin
Room 5. Twin room with wash basin
Room 6. Bunk bedded room
2 x bathrooms with shower, wash basin and wc
Separate wc



Room plans not to scale

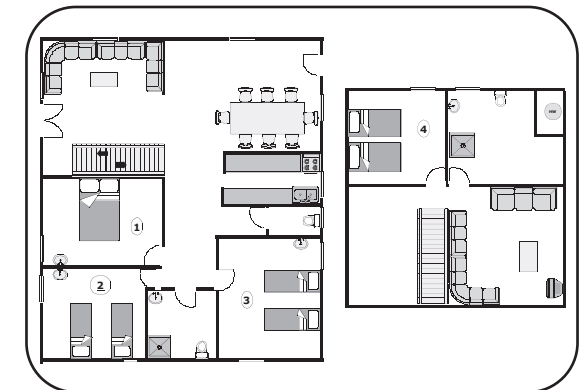


Free child places* Ski in/Ski out



Chamili Haut - Sleeps 8

Ski and boot room with heated boot warmer shared with Chamili bas guests
Comfortable open plan lounge and dining area with CD player
Separate lounge area with TV and DVD player
Room 1. Double room with wash basin
Room 2. Twin room with wash basin
Room 3. Twin room with wash basin
Room 4. Twin room with bathroom with shower, wash basin and wc next door
Bathroom with shower, wash basin and wc
Separate wc



Room plans not to scale

Towels and hairdryers are provided in all of the chalets and for the comfort of our guests. All chalets are non smoking. Outdoor shoes are not worn in the chalets so please bring a pair of slippers with you.





Chalet Chocolat



Chalet Chocolat, La Tania

Conveniently located in the heart of the old village, close to the gondola, bars and restaurants.

Accommodates 10

Located in the heart of the old village of La Tania, Chalet Chocolat is a typical Sayoyarde style chalet which is solidly built of stone and wood. Conveniently situated, it is less than 100 metres from the Tania gondola, ski school meeting place, village with all bars and shops and the piste. The very popular Taiga restaurant and lounge bar are just 50 metres away.

The chalet will sleep 10 people in twin or double rooms. Cots or additional z beds could be added to some rooms for babies or children. All rooms have en-suite bathrooms with wash basin, toilet and shower. The delightful lounge with its wood burning stove is furnished in typically Alpine style and is very comfortable and is equipped with TV, DVD player, stereo and various board games for guest's enjoyment.

There are stunning views from the sunny patio area located just outside the lounge. Parking for 2 or 3 cars right outside the chalet is available and a free car park is about 50 metres away.

Towels and hairdryers are provided in all of the chalets and for the comfort of all of our guests, all chalets are non smoking. Outdoor shoes are not worn in the chalets so please bring a pair of slippers with you.

What a holiday! snow- unbelievable! Chalet and position- perfect! Kids loved the nannies and had great fun! Food was to die for! I was even looking forward to finishing skiing to get back for the delicious cakes...

E.D. Shropshire

Chalet Chocolat - Sleeps 10

Entrance level

Ski and boot room

Room 2. Twin room with en-suite shower wash basin and wc

First floor

Lounge with wood burning stove. TV, DVD and CD player

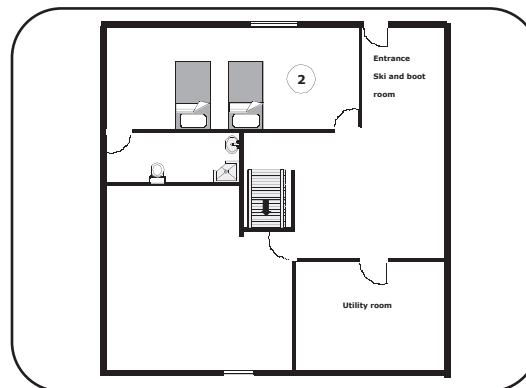
Dining area

Toilet with wash basin

Second floor

Rooms 4 and 5. Double rooms with en-suite shower, wash basin and wc

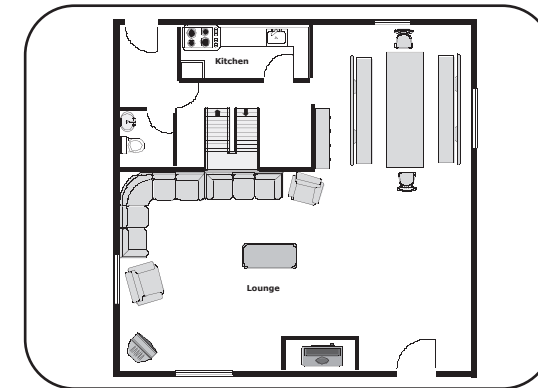
Rooms 3 and 6. Twin rooms with en-suite shower, wash basin and wc



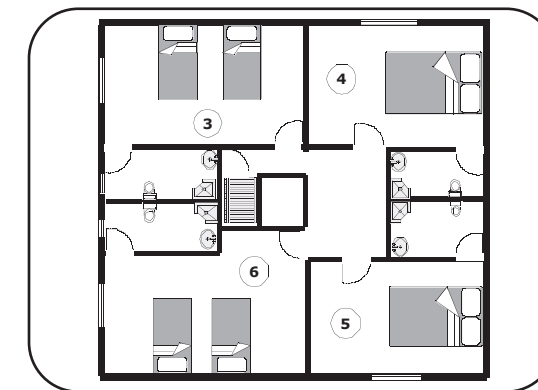
Room plans not to scale



Superb location
in old village
close to piste



Room plans not to scale





Chalet Cuisine

Upon arrival in your chalet, you will be welcomed by our staff, who are carefully selected for their catering competence and their warm and pleasant personalities. They will prepare your breakfast, afternoon tea and a 3 course evening meal as well as do all of the shopping and cleaning. Premier cuisine is included in Chalet Clementine which includes pre dinner canapés, an aperitif and a four course dinner which includes a cheese course. This can be included in any of the other chalets on payment of a small supplement, if requested.

Our staff have one well earned day off per week when breakfast will be left out for you to help yourself to. Fresh bread will be delivered to the chalet. This will be an opportunity for you to sample the many local restaurants serving local Savoyarde style dishes and pizzerias for your evening meal. Our staff will be happy to recommend a restaurant and make a booking for you.

A typical day begins with early morning tea or coffee, served in your room, on request - very popular with many guests! This is followed by a substantial breakfast of fruit juice, assorted cereals, creamy porridge, yogurts, freshly baked bread and preserves and tea and coffee. A hot option is served every day such as bacon and scrambled egg. A bowl of fresh fruit is available in every chalet.

A delicious home baked cake with fresh bread, preserves, tea, coffee and hot chocolate awaits you on your return from a day on the slopes.

In the evening normally around 8 pm, a superb three course evening meal with carefully chosen appellation controlled red or white wine is served followed by fresh coffee and mints.

We can cater for most dietary needs and requirements such as birthdays and anniversaries but please advise us at the time of booking.



SAMPLE MENU

- salmon and broccoli roulade
- *
- Chicken breast with prosciutto and a champagne sauce.
- Duchess potatoes and seasonal vegetables
- *
- Raspberry and lemon Bavaois
- *
- Coffee and mints



VEGETARIAN MENU

- stuffed mushrooms
- *
- Brie and leek crêpes
- Dauphinoise potatoes and seasonal vegetables
- *
- Chocolate Ammaretti creams on a forest fruit coulis
- *
- Coffee and mints.



FAMILIES AND CHILDCARE

Ski Magic welcomes children to our chalets, with Chalets Chalouis and Chamili in La Tania being especially suitable for families as we are able to offer FREE CHILD PLACES* in these chalets for children under 12 years old on all weeks except Half Term, New Year and Easter when generous discounts are offered. Reductions for children under 12 are offered in Chalets Clementine and Chocolat.

*To benefit from a FREE child place children must sleep in bunk bedded rooms, in a room with their parents or on a mezzanine and is limited to one FREE child place per family. FREE child places are offered at the discretion of Ski Magic.



We have a range of cots and cot linen, highchairs, car seats and boosters, sterilizers both steam and microwave, baby gates, buggies and baby carriers as well as toys, games and videos and DVDs for varying ages.

Children's Meals

In order to ensure that the adults evening meal is as tranquil as possible; children aged 12 and under, are expected to take an early supper served between 5.30 and 6pm. Space permitting and provided that your party has sole occupancy of the chalet, it is sometimes possible for children to eat with their parents at 8pm but this facility needs to be booked at least 14 days prior to departure, and if the child has qualified for a free child place, a £50 supplement will be applied.

The Magic Snowflake Club

We offer childcare on a full or part time basis to children from 3 months to 10 years old. The children will be taken care of by our team of qualified, enthusiastic but responsible nannies in our movable crèche which takes place in the chalet where the most children are staying and so is different each week. All of our nannies are CRB checked and their references rigorously checked and are NNEB or equivalent qualified though we do employ teachers or nurses occasionally. We adhere to strict UK ratios authorized by UK Authorities so that you can relax, safe in the knowledge, that your children are being well cared for.

Our childcare service is extremely popular and places are strictly limited so please make sure that you secure your child's place at the time of booking.

The nannies will organize a weekly programme of indoor and outdoor play to suit the age of the children in their care including model making, face painting, baking, singing, dancing as well as enjoying quiet times for story telling and a DVD. If the weather is suitable they will take the children out for gondola trips for a hot chocolate, piste picnics, treasure hunts, snowman building and sledging. Rest assured that your children will have as much, if not more fun that you do!

The Magic Snowflake Club operates from 0845 to 5pm Sunday to Friday but excluding Wednesday which allows parents a day to play with their children.

All sessions mornings, afternoons and full time, include a hot lunch except Friday when the children have a farewell party. Mid session snacks and unlimited drinks are offered to the children. If your child is under 12 months we would strongly recommend that you bring jars of baby food that your child is used to avoiding the chance of a tummy upset due to change of food. However we can organize jars of French baby food in the crèche. Please bring with you any formula milk and nappies that are required. You can pre order nappies to be waiting for you in resort to save luggage space. Please email our office with your requirements and size and we will charge your credit card.

GREAT SAVING ON FAMILY WEEKS!

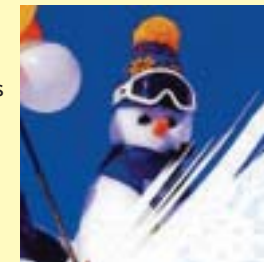
For specific dates see Loose leaf Price Sheet and How to Book. For weeks below normally first week of the season and Christmas week, first three weeks in January and one week in March. We offer one **FREE part time childcare place per family in the Magic Snowflake Club plus ***FREE ski hire for children under 10 years old. In addition to the FREE child places offered in Chalets Chalouis and Chamili, this makes these weeks unbeatable value for families.

**Free childcare places are limited to one child per family and can be upgraded to full time on payment of a supplement of £80.

*** FREE ski hire does not include boots or helmets. Offer is limited to either FREE ski hire or FREE childcare per child, but not both and FREE ski hire is only available if at least one other family member hires equipment through Ski Magic.



Magic Snowflake Club





Lift passes & Lessons

LIFT PASSES



Lift passes are now electronic, hands free. No photo is required except for children under 5 and seniors over 75 years whose passes are free. To prevent long queues on Sunday morning when French skiers are buying day passes, tour operators have been asked to encourage all guests to purchase ski passes through their tour operator's account before normal trading hours on Sunday morning. Jane will call at your chalet on Saturday evening and collect payment. You can pay by euros currency, Euro travellers cheques, credit or debit card. Lift passes

will then be delivered to the chalet before 9am on Sunday morning so that you don't miss any valuable skiing time. **If you would like us to have your lift passes ready and waiting for you in the chalet when you arrive, please telephone our office with your requirements and we will charge them to your credit or debit card. Early season passes are available at reduced prices.**

Family passes are available for 2 adults and up to 4 children from the age of 5 to 18 years at savings of up to 20%

COURCHEVEL VALLEY

Number of days	Adult 13-65	Adult 65-75	Adult 75+	Child 5-12	Child under 5	Family 2Ads+2Child Under 18	Family 2Ads+3Child Under 18	Family 2Ads+4Child Under 18
6	199€	171€	FREE	146€	FREE	637€	783€	929€
7	227€	195€	FREE	168€	FREE	726€	894€	1062€

3 VALLEES

Number of days	Adult 13-65	Adult 65-75	Adult 75+	Child 5-12	Child under 5	Family 2Ads+2Child Under 18	Family 2Ads+3Child Under 18	Family 2Ads+4Child Under 18
6	241€	207€	FREE	181.50€	FREE	771€	952.50€	1134€
7	277.50€	238.50€	FREE	208.50€	FREE	888€	1096€	1304€

One day 3 Valley extension: Adult 24€; Child 18€

SKI AND SNOWBOARDING LESSONS



We can arrange top quality skiing and snowboarding lessons for adults and for children from 4 years old with English speaking instructors in small groups. We generally use British ski schools and both private and group lessons are available. A ski school information sheet can be sent listing all of the options or take a look on our website where there are links to most of the ski schools we use.

A full day heli-skiing, touring or off piste skiing can be arranged with a local guide. We can also arrange and can highly recommend organized snow shoe walks with a local guide for an amazing day out in the mountains away from the pistes.

We strongly advise you to book your lessons early to avoid disappointment, especially during high season.



INSURANCE

It is essential that you are fully covered by winter sports insurance. We have arranged a special package with Fogg Travel Insurance which can be purchased on line via the Insurance link on our website.



SKI HIRE

To avoid lengthy queues in the local ski hire shops on arrival day, we have arranged for skis, boots and boards to be fitted in the comfort of your chalet by fully trained technicians, usually on the evening that you arrive in resort. All skis and boot prices are comparable to those charged in the shops and you don't have to take the kit back at the end of your stay! Just leave it in the chalet and it will be collected.

ADULT PRICES	6 DAYS HIRE	7 DAYS HIRE	8 DAYS HIRE
Ski Boots	45 Euros	50 Euros	55 Euros
Skis Beginners	60 Euros	70 Euros	78 Euros
Skis Intermediate	70 Euros	80 Euros	88 Euros
Skis Performance	95 Euros	105 Euros	112 Euros
Snowboard	75 Euros	88 Euros	100 Euros
CHILDRENS PRICES			
Skis and boots	65 Euros	75 Euros	83 Euros
Helmet	15 Euros	17 Euros	19 Euros

Prices may vary slightly

Previous seasons guests comments on Ski Hire Service:

We just couldn't believe how fast we were kitted out. We arrived at 5am., our lift passes were at the chalet waiting for us and we were on the hill by 10am. What a great service!

No queuing-no hassle. We arrived late Saturday evening thinking we may miss the next mornings ski school but the technicians fitted us up with boots and our skis appeared as if by magic overnight ready for our first mornings ski lesson.

DURING FAMILY WEEKS (shown on loose leaf price guide)

*FREE SKI HIRE FOR ALL CHILDREN under 10 years old which combined with FREE child places in Chalets Chalouis and Chamili and FREE childcare on family weeks (See loose leaf price guide) make these weeks unbeatable value for families.

* FREE ski hire does not include boots or helmets. Offer is limited to either FREE ski hire or FREE childcare per child but not both. FREE ski hire is only available if at least one other family member hires equipment through Ski Magic.

*Vouchers will be issued for free ski hire.



Equipment Hire & Ski Hosting

SKI HOSTING

Gordon and Jane are both BASI qualified instructors and they and their team of talented skiers, will organise small groups of people who ski at a

similar level and who would like to be shown around this vast ski area.

There will be some half days around the Courchevel valley exploring the wide open motorway skiing over in Courchevel 1650 or the lovely tree lined runs leading to Le Praz or La Tania or perhaps later in the week, practice some bump skiing on Suisse or one of the couloirs. There will also be some longer trips venturing into the Meribel valley and a full days tour of the Three Valleys, weather permitting. Ski hosting is not suitable for beginners for whom we recommend ski school.

During the longer Spring days we will be organising lunch time barbeques and picnics, a chance for all the family to meet up.

For the energetic and those looking for a thrill, we can organise early evening trips to the luge run in Courchevel 1550 where you can sledge from Courchevel 1850 to 1550, at your own risk, of course. We will then finish off the evening with a glass of vin chaud before taking you back to your chalet in time for your evening meal.

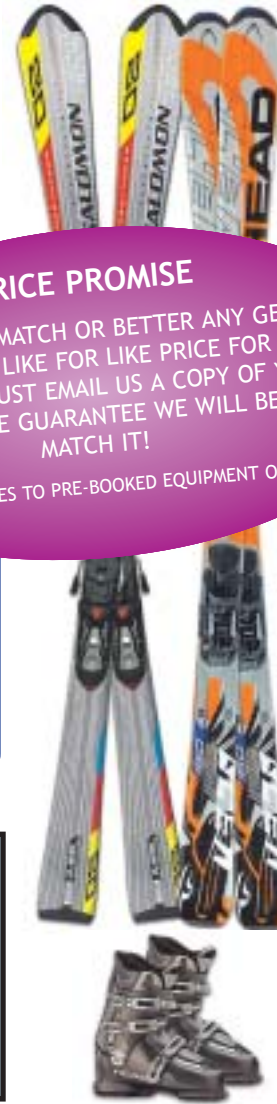
All outings will be arranged in resort.



PRICE PROMISE

WE WILL PRICE MATCH OR BETTER ANY GENUINE ADVERTISED LIKE FOR LIKE PRICE FOR SKI EQUIPMENT. JUST EMAIL US A COPY OF YOUR QUOTE AND WE GUARANTEE WE WILL BEAT OR MATCH IT!

OFFER APPLIES TO PRE-BOOKED EQUIPMENT ONLY



FLIGHTS

Our prices do not include travel or transfers. We are sometimes able to find cheap flights for you via our ATOL bonded agent who will obtain the best price available at the time of booking. Alternatively please check out one of the low cost the airlines and links listed in the loose leaf price insert.

We are fully licensed with the French Authorities to undertake transfers from Chambéry, Geneva, Lyon or Grenoble for flights arriving between the hours of 9am and 5pm and departing between 10am and 6pm. We work very hard to minimize any waiting around at the airport and to make sure your transfers to and from the chalets go as smoothly as possible but we reserve the right to combine transfers for flights scheduled to land within 30-40 minutes of each other. If you arrive earlier than 9am, you could enjoy breakfast or a coffee at the airport and we will meet you at the meeting point. If your flight arrives after 5pm and before 8pm a surcharge will be added to your transfer (see prices on loose leaf). We are unable to offer transfers for flights arriving after 8pm. Please liaise with our office before booking flights if you wish us to transfer you to resort.

Unsociable flight arrival and departure times may be unavoidable if you are looking for the best deals, but please bear in mind that we may not be able to offer transfers. However we may be able to assist with an alternative and can always assist with taxis, private transfers, public buses or car hire. See links below.

Infant's car seats and boosters will be provided for children on transfers carried out in our minibuses, but may not be available on coaches or buses.

Transfer prices are on the loose leaf insert.

Private transfers can be arranged with www.3vt.co.uk or www.snowboundtransfers.co.uk

Coach from Lyon - www.altibus.com Coach from Geneva - www.altibus.com

TRAIN 8 DAYS SKIING

There are three options.

1. Overnight sleeper snow train (6 couchettes per compartment) which departs London on Friday afternoon and arrives in Moutiers early Saturday morning. You normally have to change in Paris. The return journey departs Moutiers on Saturday evening and arrives back in London on Sunday morning.
2. Overnight Eurostar direct from London which departs Friday evening and arrives Saturday morning. It departs on Saturday evening arriving back in London on Sunday morning. This train has no sleeping compartments.
3. Eurostar departs London Saturday morning and arrives in Moutiers late Saturday afternoon. It departs the following Saturday morning arriving back in London on Saturday afternoon.

The great benefit from option 1 and 2 is that you are able to ski on both Saturdays allowing you 8 days skiing!



PLEASE NOTE THAT HOWEVER YOU TRAVEL, FOR THE COMFORT OF OUR OUTGOING GUESTS, WE CANNOT ACCOMMODATE NEW ARRIVALS INTO ANY OF OUR CHALETS BEFORE 9AM ON THE DAY OF ARRIVAL OR AFTER MIDNIGHT. The chalets will not be cleaned and ready for new arrivals until after 3pm on Saturday afternoon. However, should you arrive between 9am and 3pm we will make somewhere available for you to leave your bags and change to go skiing. Conversely, if you wish to ski on the following Saturday, we ask you to vacate your chalet by 10am and we will store your luggage for you and endeavour to make a room available for you to change before you leave resort.



Travel Information

SELF DRIVE

Driving to the Trois Vallees is very straight forward. From Calais it is 575 miles to La Tania and is motorway all the way to within 20 minutes of the resort. The journey takes approximately 9½ hours from Calais and tolls for the return journey are approximately £100. There is ample free parking near to all of our chalets. Detailed directions can be sent.

EUROTUNNEL



Eurotunnel offers a fast, frequent smooth service from Folkestone to Calais which takes 35 minutes by day and 45 minutes by night and we are now able to offer some impressive package deals. Please call our office for details.



SEA FRANCE



SeaFrance offers fast and regular sailings on their luxury ferries from Dover to Calais. Crossing time is approximately 1 hour 15 minutes. There is a link to SeaFrance for the latest fare prices on our website.



BY COACH

www.skimeribel.co.uk Phone 020 8649 8458

A very cost effective way to travel to the Three Valleys. The direct coach departs London Victoria station on Friday afternoon and arrives in La Tania or Meribel on Saturday morning.

